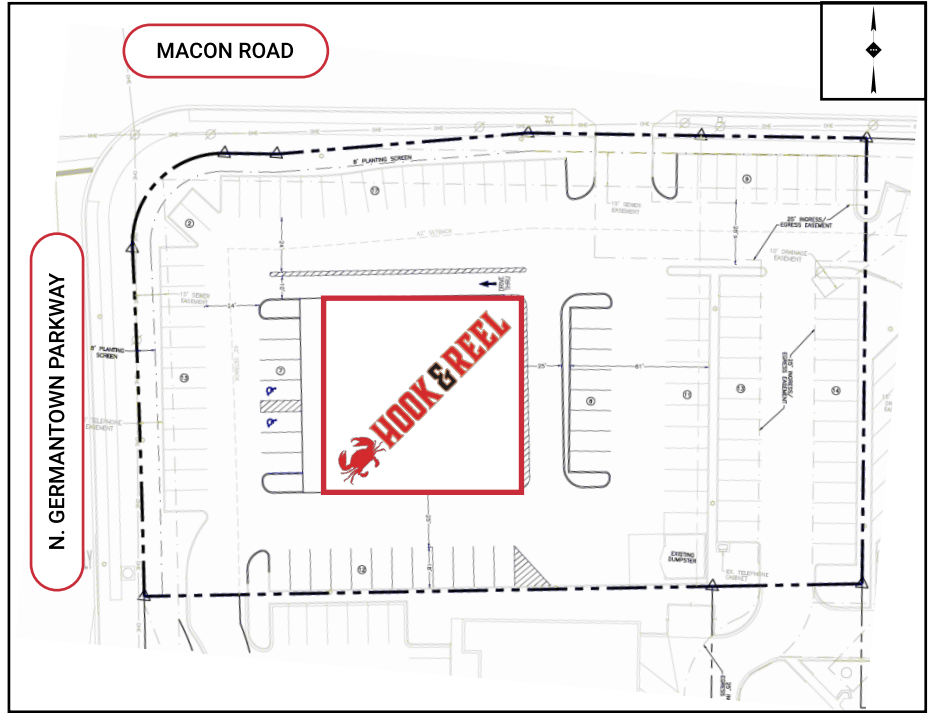


RESTAURANT REDEVELOPMENT CORDOVA, TENNESSEE

1040 N Germantown Parkway, Cordova, Tennessee 38101

MSA MEMPHIS



PROPERTY SUMMARY

BUILDING SQUARE FOOTAGE: 6,800 SF

TOTAL GROSS LEASABLE AREA: 12,228 SF

LOT SIZE: 1.22 Acres

DRIVE-THRU



 **ALRIG USA**
DEVELOPMENT

www.alrigusa.com