

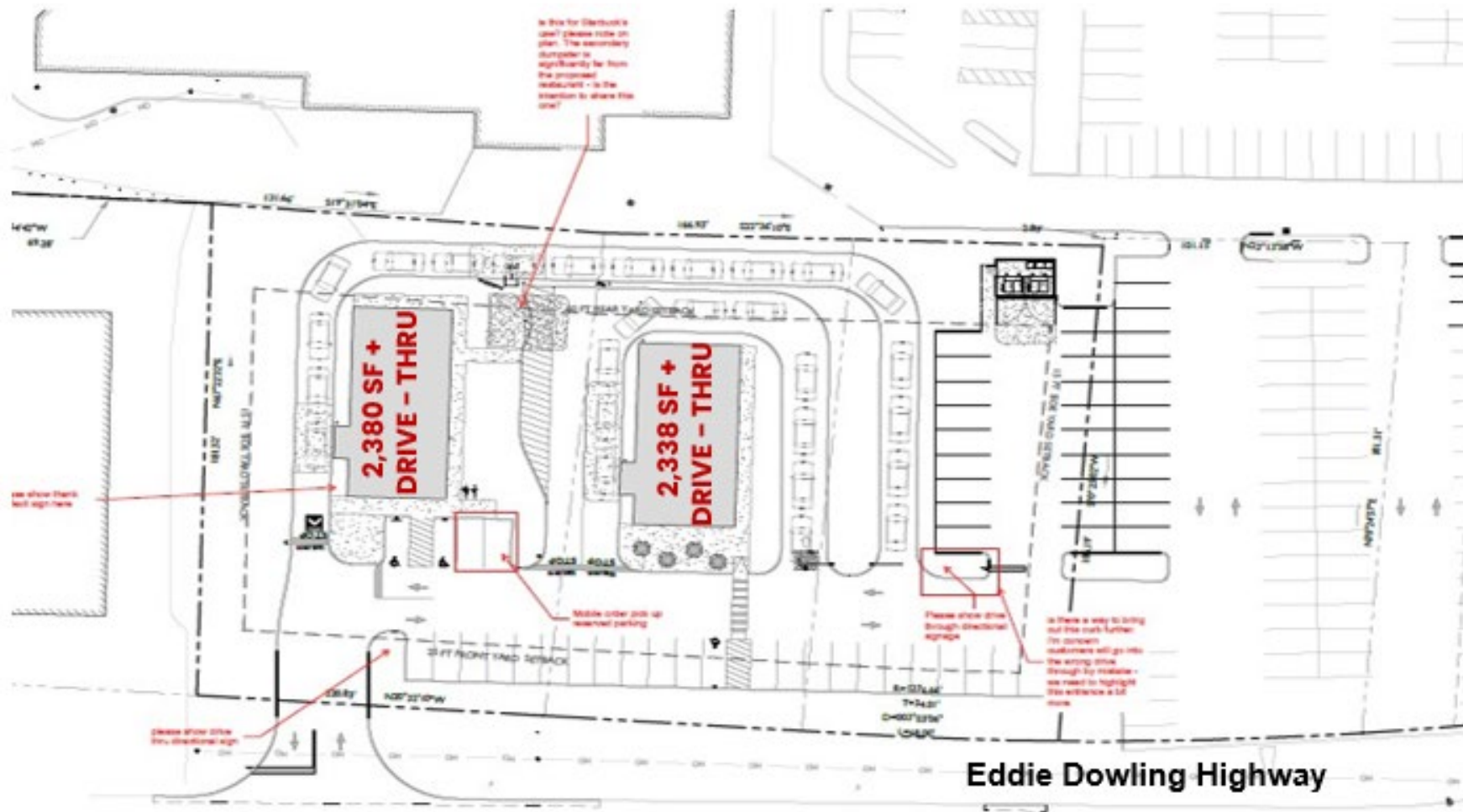
New Retail Development – N. Smithfield, RI

82 Eddie Dowling Hwy,
North Smithfield, RI
02896



Gabriel Schuchman | 248.646.9999 | gabe@alrigusa.com
Faith Fruciano | 248.983.5520 | faith@alrigusa.com





New Retail Development – N. Smithfield, RI

Available for Lease

Property Address

82 Eddie Dowling Hwy, North Smithfield, RI 02896

Property Highlights

- Join national coffee user at this brand-new multi-tenant retail development with up to **4,718 SF** available for lease
- Prominent visibility, located at a signalized intersection on the hard corner of Eddie Dowling Highway and Dowling Village Blvd
- Nearby leading retailers include Walmart, ALDI, Lowe’s, Kohl’s, CVS and many more
- Retail & restaurant opportunities available

City Overview



The second battle of Nipsachuck Battlefield, the site of battle during King Philip’s War




Wright’s Dairy Farm and Bakery offers is a local farm offering baked goods and fresh milk



Rustic Drive-In Theater offers 3 separate movie screens and takes visitors on a trip down memory lane

Property Availability

4,718 SF available for lease

Demographics	1 Mile	3 Mile	5 Mile
 Population	7,010	62,698	97,091
 Households	2,904	25,722	38,136
 Average HH Income	\$80,500	\$74,499	\$88,040
 Daytime Employment	3,655	25,810	51,844

©ALRIG USA Inc. This information has been obtained from sources believed reliable. We have not verified it and make no guarantee, warranty or representation about it. Any projections, opinions, assumptions or estimates used are for example only and do not represent the current or future performance of the property. You and your advisors should conduct a careful, independent investigation of the property to determine to your satisfaction the suitability of the property for your needs. Photos herein are the property of their respective owners and use of these images with- out the express written consent of the owner is prohibited ALRIG USA and ALRIG USA logo are service marks of ALRIG USA and/or its affiliated or related companies in the United States and other countries. All other marks displayed on this document are the property of their respective OWNERS.